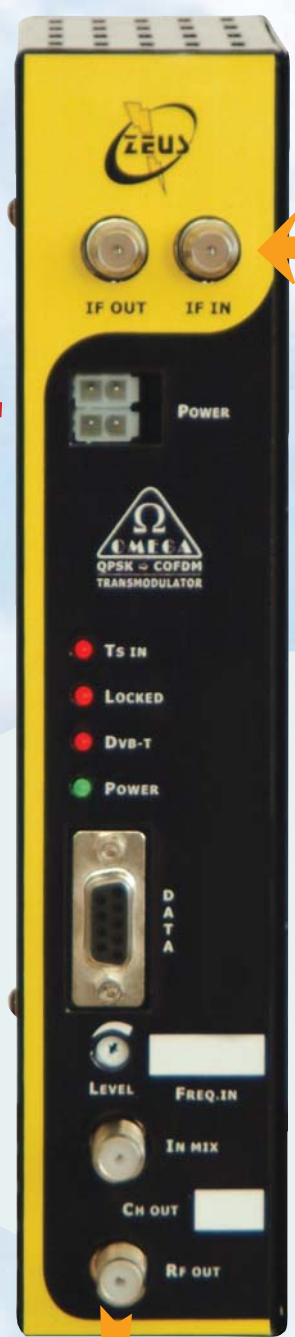


QPSK ⇔ COFDM

HEADLINE



IF Loop →

Power supply Loop →



Power supply →



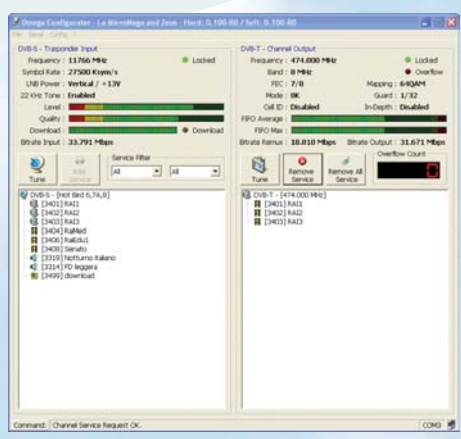
Alarms

Programming through PC

Output RF level adjustable

- ✓ **DTT via satellite**
From QPSK transponder to MUX DTT COFDM
- ✓ **Versatile**
It generates COFDM VHF - S - UHF Tv channels
The use of adjacent TV channels is allowed
- ✓ **Expandable**
Up to 6 units with a power supply
4 to 6 programs for each terrestrial channel
- ✓ **PLD tecnologia**
Transparent for programs and services
Digital quality output
- ✓ **Programmable**
Through external PC (Windows)
with free Omega Configurator software

COFDM



QPSK ⇔ COFDM

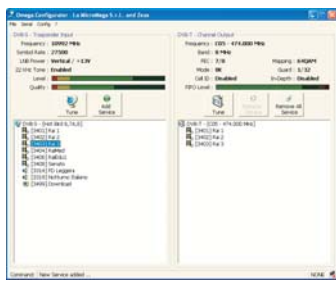
- ◆ Qpsk to Cofdm transmodulation is the new frontier of the Smatv systems. It allows the distribution of up to 6 TVSAT digital programs into a single terrestrial channel (e.g. Ch 21), keeping the quality of a digital signal and the services:EPG etc.
- ◆ This transmodulation allows to distribute **much more** programs than before without any modification of the antenna system. The frequency used is below 860 MHz and the transmission is in digital terrestrial format. (DVB-T)
- ◆ It's suitable for Hotels, Residence, Buildings.
- ◆ A Common Interface version is available.
- ◆ The LCN (Logic Channel Number) function allows to organize the sequence with which the programs will be showed on the TV set. E.g.: BBC ch. 21, CNN ch.22, etc
- ◆ The friendly programming through PC allows to choose the programs to distribute and the setting of all parameters. The enclosed Configurator software allows programming operations easily and quickly.
- ◆ The digital modulation of the RF output signal allows the use of adjacent channels.(e.g. ch 21,22,23 etc)
- ◆ OMEGA transmodulator is available in different models:
 - OMEGA DIN Ftα (DIN bar mount)
 - OMEGA RACK Ftα (6 units rack mount)
- ◆ A reliable switching power supply for 6 modules is available in both version:
 - PS-1 (DIN bar) p/n 0500
 - PS-1 (6U rack) p/n 0550



DIN bar version



6U Rack version



The programming of the module is friendly and easy thanks to the "CONFIGURATOR" software supplied for OMEGA settings.

It allows to set:

Input parameters: Frequency, band, polarity, Symbol rate, FEC
 Selection of output programs

Output parameters: Frequency, band, LCN, FEC, mode, mapping, guard.
 Thanks to the PC use, to program the module is a really quick operation.

Technical specifications

I N P U T	Input frequency	MHz	950 - 2150	R F O U T	Output frequency	MHz	47 - 862
	Input level	dBm	-65 / -25		Output level adj.	dBμV	70 / 90
	Input - Loop through	dB	typ. 0		Output - Loop through	dB	-1,5
	Symbol rate	MS/s	2 / 45		Frequency stability	ppm	± 10
C O N F I G U R A T O R	Operation modes		2K / 8K	Spurious in band	dBc	< -50	
	Constellation		QPSK / 16QAM / 64QAM	Broadbd. Δ B=8MHz	dBc	< -75	
	Code rate		1/2 - 2/3 - 3/4 - 5/6 / 7/8	P.supply	V	24 Vdc (500 mA + Lnb)	
	Guard interval		1/4 - 1/8 - 1/16 - 1/32	Working temp	c°	0 + 50	
M E R	MER	dB	>38	Connectors In/Out		F type	
				Dimensions	mm	48 x 250 x 155	

